

## I.E.S. Maimónides Website Project : The City of London



London is an enormous city, full of life, full of things to see, do, smell, touch and explore. It's difficult to write everything about London for you here, but here are some basic facts about London:

**London** is the capital of England and the United Kingdom. It is the UK's largest and most heavily populated metropolitan area and the largest urban zone in the European Union by most measures.

Size, population etc. <http://en.wikipedia.org/wiki/London>

And things to see, well, we're sure you already know some of the most famous ones, for example, Big Ben, the London eye, the Tower Bridge...so instead, we're going to tell you about some of the attractions and museums in London. Here are some of the most popular ones:

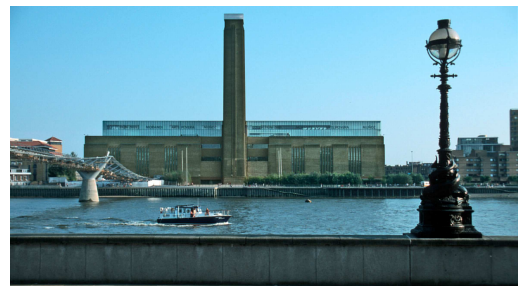


### **The British Museum**

The British Museum exhibits the works of man from prehistoric to modern times from around the world. Famous objects include the Rosetta Stone, Parthenon sculptures and the Portland Vase.

### **The Tate Modern**

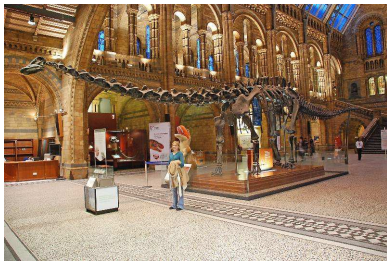
The impressive Tate Modern is Britain's national museum of modern art. Housed in the former Bankside Power Station on the banks of the River Thames, the gallery displays major works by Matisse and Picasso as well as contemporary work, exhibitions and installations.





### **The National Gallery**

The National Gallery houses one of the greatest collections of European painting. With paintings ranging from 1250 to 1900, it features work by Botticelli, da Vinci, Rembrandt, Turner and Van Gogh.



### **The Natural History Museum**

As well as the permanent dinosaur exhibition, the museum boasts a collection of the biggest, tallest and rarest animals in the world. See a life-sized Blue Whale, a 40-million-year-old spider and the Darwin Centre.

### **The Science Museum**

See, touch and experience the major scientific advances of the last 300 years at the largest museum of its kind in the world. The Science Museum has over 40 galleries and 2000 hands-on exhibits!



### **Madame Tussauds**



At Madame Tussauds, you'll see some of the world's most famous faces. From Shakespeare to Wayne Rooney, you'll meet influential figures from showbiz, sport, politics and even Her Majesty the Queen!



### **Tower of London**

Take a tour with one of the Yeoman Warders around one of the most famous fortified buildings in the world.

Discover its 900 year history as a royal palace and fortress, prison and place of execution and jewel house.

As for **things to do in London** there's always plenty to do and there's almost always something going on. Here are some of the most famous events that take place in London throughout the year:



### **New Year's Day Parade**

This celebration that happens at New Year on the streets of West London acknowledges the heroes from each London borough. The tradition began in 1987 and is still popular today, with over 10,000 performers taking part.

The parade goes past some of London's most famous locations – White Hall, Trafalgar, Regent Street and Piccadilly to name a few.

---

### **Oxford and Cambridge Boat Race**



Every year, as the spring arrives, the Oxford University Boat Club and the Cambridge University Boat have a boat race along the River Thames. The race tests the endurance of the rowers as they paddle upstream along the huge river. This

occasion is watched by around 120 million people across the world!

---

## London Marathon

The London Marathon, held in April, is London's largest socio-sporting event. The course is 42.195km long and goes all through London, including the Houses of Parliament and Buckingham Palace. A total of around 30,000 runners participate in what has now been officially recognized as the world's largest fund raiser for charities!



---

## Chelsea Flower Show



In May, people from across the world come to London to appreciate the floral beauty of Chelsea Flower Show. From its humble beginnings in 1911, this event has now become grown to become an important event in London. Many have said that it is like the Paris Fashion Week, but for plants! If you are a person who enjoys nature in all its splendour, the Chelsea Flower Show is the place to be!

---

## Wimbledon Tennis

Wimbledon is the home of Tennis! Held in London in British summertime, in June and July, Wimbledon is the third grand slam event. The whole championship usually lasts for two weeks but it depends on the rain! Many people go to Wimbledon to watch the tennis and it is typical to eat strawberries whilst watching the tennis!



---

## Notting Hill Carnival

What began as a gesture to bring communal harmony between the various races in London in 1959 has now become a cultural street party! This carnival, led by the Caribbean community, happens on an August weekend. Over 300,000 people dressed in elaborate costumes parade through the streets of Notting Hill and transform it into a cultural paradise. This is a wonderful sight to see!



## Opening of Parliament

The ceremony of Opening of Parliament is held in either October or November. The opening of the parliament involves some impressive rituals like searching the parliament to prevent a possible Gunpowder plot, or taking a hostage to ensure the safety of the monarch. A lot of interesting ceremonies can be seen as the reigning king or queen declares the commencement of a session of Parliament. This ceremony represents the importance of democracy in the United Kingdom.



---

## London Film Festival

The London Film Festival is the largest public film event in London, where about 300 movies from 60 countries are screened every year.

## Christmas Lighting Ceremonies



Christmas time starts early in London! The spirit of Christmas shines bright from early November as the whole of London is decorated by many lights and decorated trees. Everywhere from Bond Street to Covent Garden, the splendid display of lights and decorations will amaze you and really make you believe in the magic of Christmas!

Information adapted from an article on:

<http://www.top10inlondon.com/events/top-10-london-annual-events>